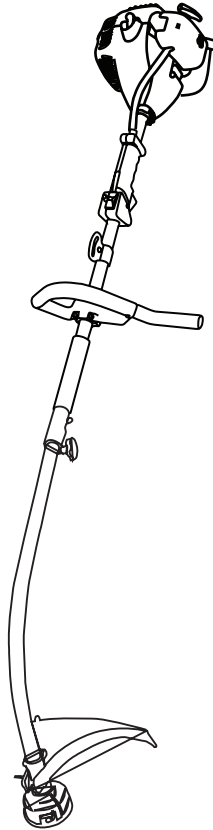


HYUNDAI

POWER EQUIPMENT

Operator's Manual

Trimmer
HYTR2650



Your trimmer has been engineered and manufactured to our high standard for dependability, ease of operation, and operator safety.



WARNING: To reduce the risk of injury, the user must read and understand the operator's manual BEFORE using this product.

Thank you for your purchase.

SAVE THIS MANUAL FOR FUTURE REFERENCE

CONTENTS

1. Safety Instructions	4
1.1 Labels On Unit	6
2. Unit	7
2.1 Power Unit	7
2.2 Grass Trimmer	7
2.3 Warranty	7
3. Assembly & Initial Operation	8
3.1 Power Unit	8
3.2 Grass Trimmer	8
3.3 Fuel Information	9
4. Operation	10
4.1 Starting The Tool	10
4.2 Spark Plug Replacement	11
4.3 Operation Safety Instructions	12
5. Inspection & Maintenance	13
5.1 Inspection & Maintenance Safety Instructions	13
5.2 Maintenance Chart	14
6. Transportation & Storage	15
7. Technical Data	16
8. Troubleshooting	17
9. Declaration Of Conformity	18

10. Notes

19

Every effort is made to improve our products continuously. Therefore, technical data and figures may change.

1. SAFETY INSTRUCTIONS

Read the instructions for use thoroughly before the initial operation of the machine. If any doubts regarding the connection and operation arise, consult the manufacturer (servicing department).

Read the instructions shown below carefully to ensure the best safety practices.

Caution!

To be safe working with this trimmer, please read the instructions and information on safety, installation and operation contained in the manual are observed. Any person engaged in the operation or maintenance of the machine should be knowledgeable regarding the operation manual and aware of any potential risk. Prevent children, the sick and infirm from access. Observe any regional and local safety precautions applicable in your country. The same applies to any provisions on the safety at work and health protection at the work site.

The manufacturer shall not be held liable if the machines it manufactures are altered in an unauthorised manner, in result of which damage was inflicted.

1. **Pay attention to the conditions of the area, which you're working in.** After the engine is started, the machine will produce poisonous flue gas. The gas may be invisible and odorless. Hence never work with the machine closed or poorly ventilated areas. Make sure there is good lighting, when in use.
2. **Make provision for the tools storage.** When not in use, the tools should be kept in a dry place, elevated or locked where practicable so that any access to them is prevented.
3. **Always use a correct tool for the job to be done.** e.g. avoid using small tools and accessories for work that should be actually done with a heavy tool. Use the tools only for the purposes they were designed for.
4. **Pay attention to clothing.** Clothing should be fit for purpose and should not put any limits to you when working.
5. **Use personal protection equipment.** Wear safety shoes, if possible.
6. **Wear goggles.** Objects may be thrown in your face.

7. **Wear ear protectors.** Wear protective equipment to protect your ears, such as ear defenders.
8. **Hand protection.** Wear gloves – leather gloves give good protection.
9. **Trimmer operation.** Never work with the cutting tool unprotected. Danger of injury with thrown-off objects.
10. **Be attentive at all times. Mind what you are doing.** Use common sense. Do not use the trimmer when tired. Never work with the trimmer when influenced by alcohol or drugs/medications.
11. **Fuelling.** Always switch the engine off before filling up. Open the tank cap carefully so that any overpressure may be let out and the fuel does not splash out high temperatures build up on the machine body when working with the trimmer. Leave the machine to cool down before filling up fuel. Otherwise, the fuel could ignite spontaneously and there is a risk of personal burns. Replenishing the fuel, mind not to overfill the tank. If the fuel drips off, it should be removed immediately and the machine cleaned.
12. **Time of Use and Breaks for Rest.** Please take regular breaks, especially in wet and/or cold weather.
13. **Watch out for any damaged parts.** Inspect the machine before use. Are any parts damaged? Watch out for proper aligning and adjustment of any moving parts. Do the parts fit properly? Are the part damaged? Is everything installed appropriately? Damaged protective devices etc. must be repaired or replaced by an authorised dealer. Any defective switches must be replaced at an authorized servicing centre. Do not use the machine if it cannot be stopped with the switch. When repairs are necessary, kindly take to your local servicing centre.
14. **Maintenance.** Switch the engine off prior to any adjustment or maintenance of the machine. The same applies to any works on the mowing head.
15. **Use approved parts only.** Use only identical spare parts for maintenance and repairs. Request the advice of an authorised servicing centre for this purpose.

Warning!

Use of other mowing head, accessories and superstructure parts that are expressly recommended may result in a threat to persons and property.

The machine should not be used for other than intended purposes. Any deviation from the purpose shall be considered an unauthorised use. Only

the user, and never the manufacturer, shall be held liable for any material and personal damage resulting from such an unauthorised use.

The manufacturer shall not perform any warranties if the machines manufactured by it are altered or used in an unauthorised manner and if damage is inflicted in result.

1.1 Labels On Unit

Meaning of Symbols

Symbols shown below are used throughout this manual and/or on the unit:



EU standards compliant



Warning/Caution



Read operating manual before use



Do not bring any fire or flame near the fuel



Be aware of thrown out objects



Be aware of toxic fumes



Protect the equipment from rain and damp



Take care of thrown objects



Take care of overhead electric power lines



Keep bystanders away



Rotating cutting blade



Keep bystanders at 15m away



Use safety equipment to protect head/face



Wear protective shoes

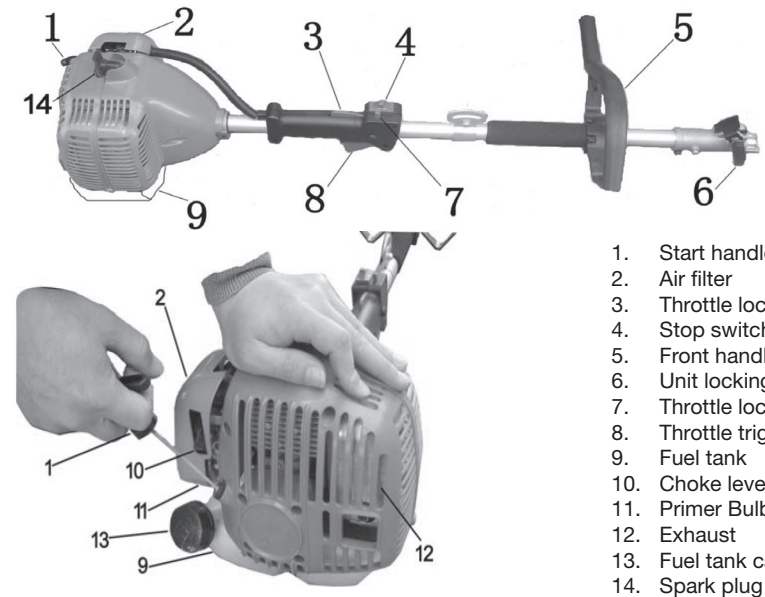


Use protective gloves

2. UNIT

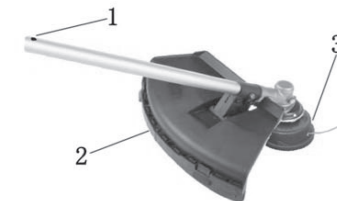
A universal combination set enabling perfect care of the garden and vegetation. Just one instrument is sufficient to trim the lawn edges, cut hedges and lop trees.

2.1 Power Unit



1. Start handle
2. Air filter
3. Throttle lockout
4. Stop switch
5. Front handle
6. Unit locking screw
7. Throttle lock
8. Throttle trigger
9. Fuel tank
10. Choke lever
11. Primer Bulb
12. Exhaust
13. Fuel tank cap
14. Spark plug

2.2 Grass Trimmer



1. Locking hole
2. Guard
3. Cutting string

2.3 Warranty

Warranty claims according to the warranty certificate attached.

3. ASSEMBLY & INITIAL OPERATION

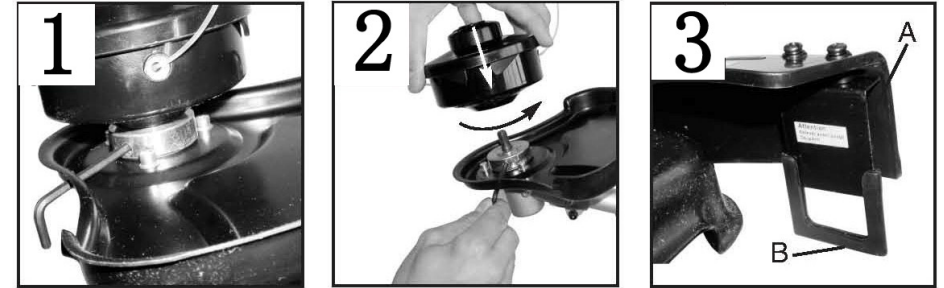
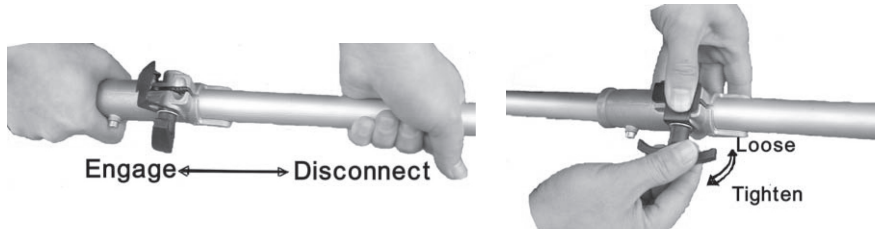
3.1 Power Unit



- | | | | |
|-----------------|---|---------------------|---|
| 1. Front handle | 1 | 4. Cover | 1 |
| 2. Screw 5 x 35 | 4 | 5. Front handle bar | 1 |
| 3. Nut 5 | 1 | 6. Screw 4.2 x 9.5 | 1 |

Install the front handle as shown in the diagrams. Do not tighten the screws until you have set the perfect working position with the carrying strap. The front handle should be aligned as show in "Power Unit" diagram.

3.2 Grass Trimmer



3.3 Fuel Information

Refuelling:

For air-cooled 2-stroke engines, mix unleaded petrol well with branded oil at a ratio of 40:1. Meaning that 0.2 liter oil has to be added in 8 liters of petrol.

Tip: Always prepare 1 litre of the mix at a time because the mix turns unusable after prolonged storage. Take care of fire.

Warning: Petrol is highly flammable.

Take the following precautions:

1. Store fuel in containers specifically designed for this purpose.
2. Refuel outdoors only and do not smoke while refueling.
3. Add fuel before starting the engine. Never remove the cap of the fuel tank or add petrol while the engine is running or when the engine is hot.
4. **Avoid spillage:** if petrol is spilled, do not attempt to start the engine but move the machine away from the area of spillage and avoid creating any source of ignition until petrol vapors have dissipated.
5. Tighten all fuel tank and container caps securely.

4. OPERATION

4.1 Starting The Tool

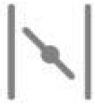
Start the tool only after an integrated piece has been well connected!
Lock the trimmer cutting head for 15 NM.



Put the operating switch at position "I".



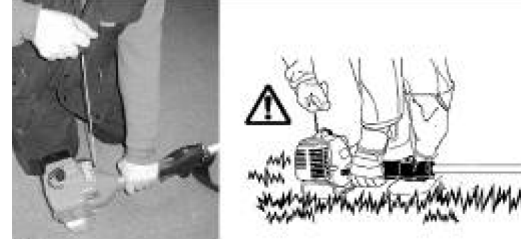
Put the starting choke lever in position "Start".



Push the primer bulb 3-5 times.



- Push unlocking knob and accelerate
- Push the throttle lock in at this position (cold)



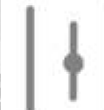
- Start the machine by carefully pulling the starter cable.
- Do this whilst holding the machine against the ground.



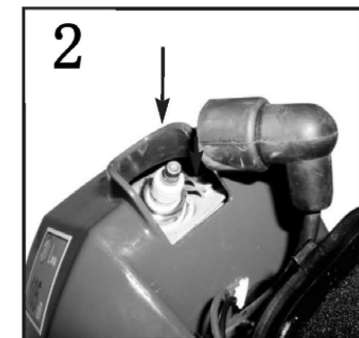
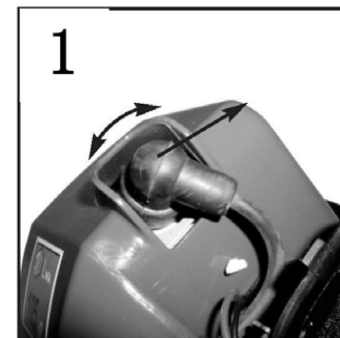
Now, control the throttle so that the machine runs evenly for it to reach full speed.



As soon as the engine is running smoothly, the choke may be returned to its normal position.



4.2 Spark Plug Replacement



Pull the spark plug cover off, unscrew the plug using the plug wrench and replace it.

4.3 Operation Safety Instructions

To turn the machine off, the switch has to be in "STOP" position.

- When mowing, mind the specific regulations of a country and specific communal regulations.
- Do not mow at night.
- Any hard objects – stones, metal parts etc. – have to be removed. They could be thrown away and cause personal or material damage.
- Working in high shrubs or bushes, the working height must be 15 cm as a minimum not to expose animals, such as hedgehogs, at any risk.

Grass Mowing

Working on grass areas, hold the scythe at an angle of ca 30° and make semicircle turns to the left and right.

The best results are achieved with grass 15 cm high. If it is higher, it is recommended to repeat mowing several times.

CAUTION!

When the machine is running never put the mowing head on the ground.

If the mowing output decreases

1. Hold the running machine over the grass and knock the ground several times with the mowing head the fiber will get prolonged in this way.
2. The cutter enclosed in the protection shield will cut the fiber to the required length.

Caution! The fiber remnant may be thrown off and cause an injury.

5. INSPECTION & MAINTENANCE

CAUTION!

The instructions below shall apply to regular conditions of use. In severe conditions and longer periods of work, it is necessary to shorten the intervals as appropriate.

After having accomplished the job, always check over the entire machine and carry out cleaning.

Regular check and treatment:

- Check the air filter (clean it up if necessary)
- Check the ignition plug (replace if necessary)
- The function and quantity of the plastic cord.

Always switch the power unit off when doing maintenance or a repair.

5.1 Inspection & Maintenance Safety Instructions

Only a unit maintained and cared for on a regular basis may be a serviceable aid. Insufficient maintenance and care may result in emergencies and unforeseen accidents.

Only authorised servicing agents may do repairs requiring special professional knowledge.

Follow these precautions:

- Keep all nuts, bolts and screws tight to be sure the equipment works as intended.
- Do not store with petrol in the tank.
- Allow engine to cool before storing.
- Keep hot engine parts away from grass, leaves and excess grease.
- Replace worn or damaged parts.
- If petrol tank needs draining, do it outdoors.
- Do not attempt to repair the machine unless you are competent to do so.
- Use only genuine Hyundai parts and accessories.

5.2 Maintenance Chart

Refer to the following table for routine maintenance:

Features	Requirements	Before use	After use	Refuel	Monthly	Yearly	If damaged	As required
Machine	Visual inspection (leaks)	●		●				
Throttle lever	Check operation	●						
Throttle trigger interlock	Check	●						
Stop switch	Check	●						
Fuel tank	Clean Outside		●					
Cutting head Assy.	Check & clean		●					●
Gearbox	Grease (straight shaft)					●		●
Air filter	Check				●			
	Clean				●			●
	Replace (depending on conditions)						●	●
Cowling	Clean		●					
Cylinder fins	Clean							●
Spark plug	Clean & readjust gap					●		●
Nylon line	Stock replacement					●		●
Trimmer head	Clean	●						
	Replacement						●	●
All accessible fasteners	Retighten	●						●
Exhaust	Inspect	●		●				
	Clean or replace						●	●

- Always stop the engine before any maintenance is done on the unit.
- When all parts have stopped moving, remove the spark plug lead to begin maintenance work.
- Never repair cutting attachments by welding, straightening or changing the shape. This may result in serious injury.
- Never attempt maintenance that is not outlined in this manual. All repair work must be carried out by a Hyundai Authorised Service Centre.

6. TRANSPORTATION & STORAGE

If the trimmer is to be out of operation for a long period of time (over 1 month), take action as follows:

- Drain the oil and fuel tank.
- Remove and clean the string coil.
- Wipe the string coil.
- Wipe the external part with a soft cloth soaked in fine suds.
- Store the set at an elevated locked place outside the reach of children.
- Store the set at a dry place.

7. TECHNICAL DATA

Guaranteed sound power level (LwA)	112 dB(A)
Guaranteed sound pressure level (LpA)	102 dB(A)
Guaranteed vibration at racing speed	7.5m/s ²
Guaranteed vibration at idling speed	5m/s ²

Engine:

Type of the engine	Hyundai
Engine Displacement	25.4cc
Engine Speed	8500 rpm
Fuel Tank Volume	0.45L
Starting System	Recoil Start
Engine Idling Speed	3200 rpm
Specific Fuel Consumption	582 g/kWh
Fuel Consumption	0.49 kg/h
Carburettor	Ruixing H119
Spark Plug	NGK BPMR7A
Fuel Ratio	40 : 1

Trimmer:

Nett Weight (No Attachment)	5.4 kg
Nett Weight (With Attachment)	6.2 kg
Gross Weight (With Attachment)	6.5 kg
Cutting Diameter / Thickness	420mm / 2.0mm
# of Cutting Points	2
Blade centre hole diameter	25.4 mm
Engine Speed with Attachment running	5600 rpm
Gear Ratio	20:15
L x W x H	1.7m x 0.35m x 0.25m

8. TROUBLESHOOTING

Fault	Cause	Remedy
The machine does not start	Correct starting procedure not followed	Follow the instructions for starting
	Sooted or damp spark plug	Clean the spark plug or replace it with a new one
	Incorrect carburetor setting	Contact an authorized customer service outlet
The machine start but does not develop its full output	Incorrect choke lever setting	Set choke lever to open
	Soiled air filter	Clean the air filter
	Incorrect carburetor setting	Contact an authorized customer service outlet
The engine does not run smoothly	Incorrect electrode gap on the spark plug	Clean the spark plug and adjust the electrode gap or fit a new spark plug
	Incorrect carburetor setting	Contact an authorized customer service outlet
Engine smokes excessively	Incorrect fuel mix	Use the correct fuel mix (see fuel mixing table)
	Incorrect carburetor setting	Contact an authorized customer service outlet

9. DECLARATION OF CONFORMITY

Genpower Ltd confirms that this Hyundai product conforms to the following CE directives:

- 2006/42/EC Machinery directive
- 2004/108/EC EMC directive
- 2000/14/EC Noise emissions directive
- 97/68/EC NRMM Emissions directive

10. NOTES

HYUNDAI
POWER EQUIPMENT

GENPOWER LTD

Unit 1, Dowty Park, Thornton Ind. Est.
Milford Haven, UNITED KINGDOM, SA73 2RS
T: +44 (0) 1646 663 848 F: +44 (0) 1646 663 856

e: info@hyundaipowerequipment.co.uk

www.hyundaipowerequipment.co.uk